



LESLIE SCHWING

THE STRUCTURAL PRINT: COLLOGRAPHS BY LESLIE SCHWING

Spring 2021

943 N. Calvert Street
Baltimore, Maryland 21211





THE STRUCTURAL PRINT

CLAUDIA BISMARK

There's a density and intensity to Leslie Schwing's artwork that defies one to really stop, to focus sharply, look around and go deeper. In much the same manner, Leslie's artmaking has over the years challenged categorization because of her studious experimentation with techniques and symbols.

Throughout this exhibition, we are presented with an opportunity to see a result of her search for means of structured expression, in her words "another set of skills and tools that I own because I created them." There are several starting points: her long-standing love of paper; her cutouts used with other mediums; and an introduction to

monoprints and collagraphy at Ink Spot Press.

For a monoprint, an image can only be made once and mark-making is removed as the paper is pressed to the plate. But the "repeatable" quality of collagraphy, with her cutouts still in place, was enticing and became the basis for one-of-a-kind pieces—each print unique within the edition. In Leslie's hands, the "repeatability" of printmaking takes on a new dimension.

Collagraphy allows for multiple originals. The word collagraph (or collograph) is from the Greek word koll or kolla, meaning glue, and graph, meaning drawing.



Catbird in the Wisteria
14x11.5



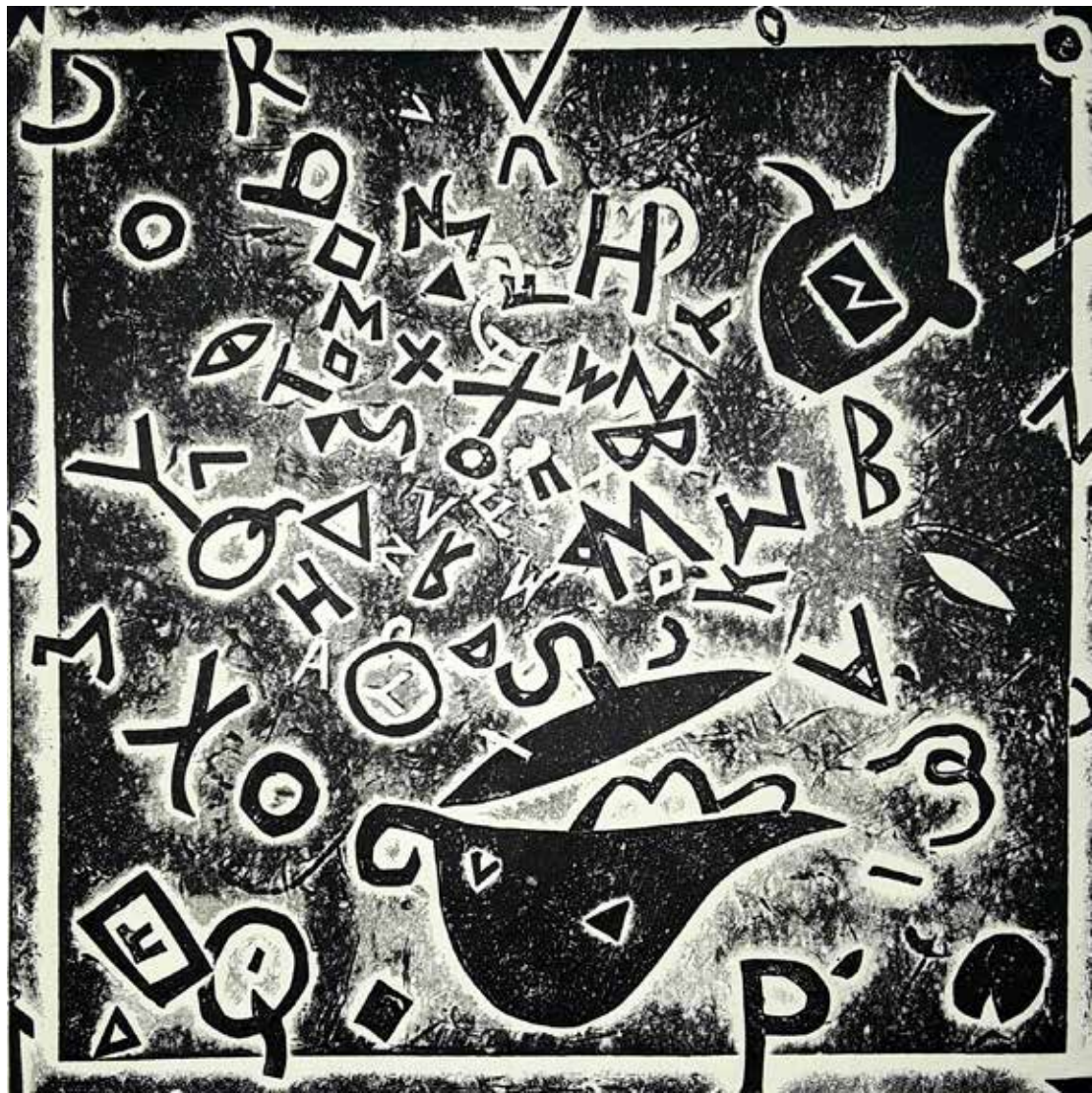
Saint Monkeying Around
18x18

A collagraph is an original print pulled from a plate that was constructed by gluing materials to a rigid surface to create lines, textures and tonal effects when hand-inked, hand-wiped and pressed to transfer the ink to rag paper. The depths of relief and the varieties of texture on the plate, along with varying methods of hand-inking and the use or not of an etching press, can result in an exciting combination of both intaglio and relief methods which are generally considered to be direct opposites.

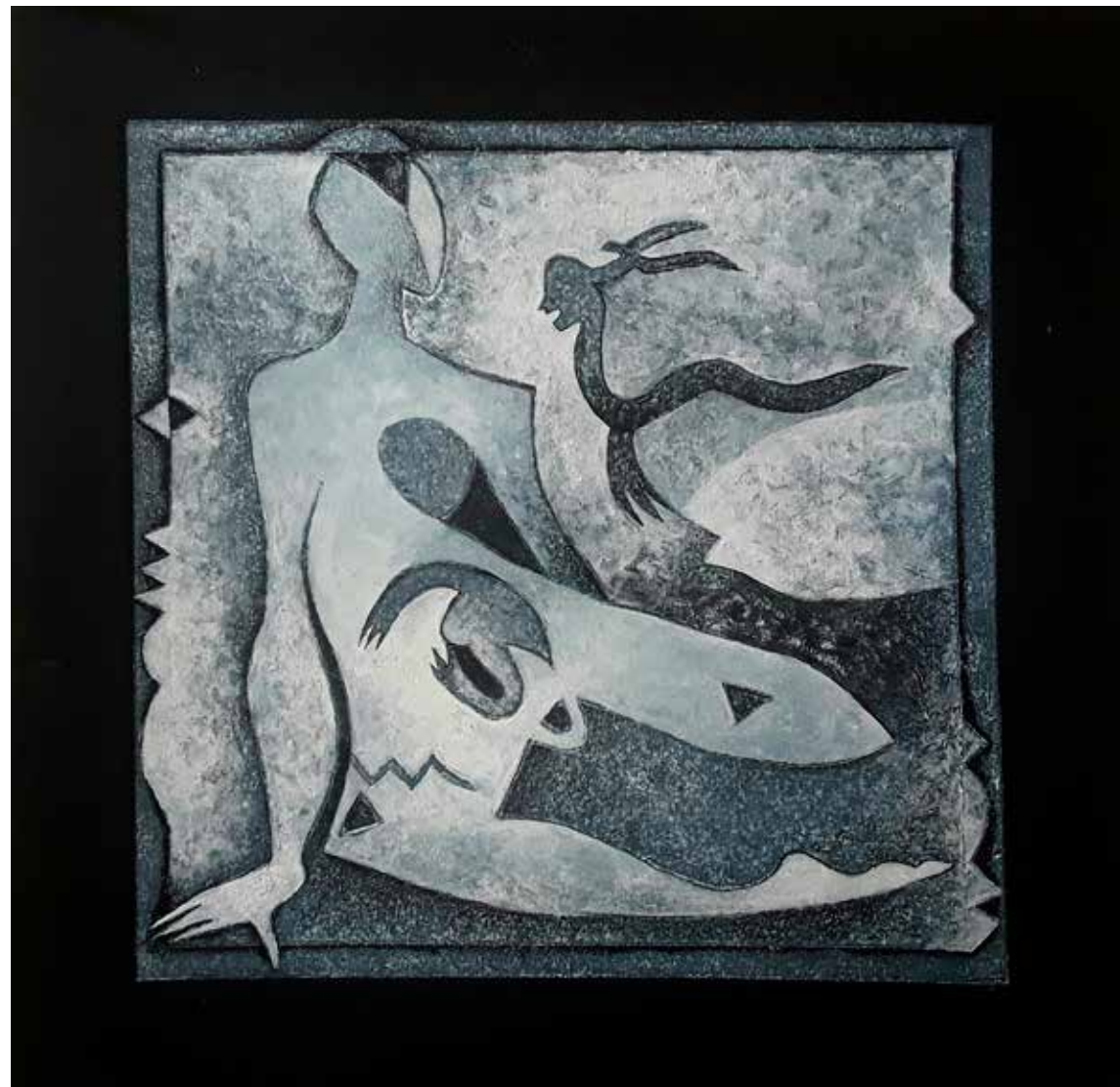
Crossover and overlapping categories of work in this exhibition further illustrate ongoing experimentation and serve as guides to several series. Adapting painting and dual-inking techniques for a chiaroscuro effect develops the added dimension of Magnolias in the Garden series. In *Catbird in the Wisteria* (opposite), by working back in with acrylic gouache and ink, the printed image is hand-colored. Her Storytelling series reaches back to childhood, mythology and foreign locales, whose characters are revived and fables re-told in her new work. None more timely to

the current crisis than the characters of *Saint Monkeying Around* (left) with its stars made from the toilet paper rolls made almost “sacred” during in the Covid-19 pandemic.

Leslie Schwing studied with printmaker Leonard Maurer at Montgomery College, and painters Leon Berkowitz and Franklin White at the Corcoran School of Art. A B.A. with Distinction in Fine Arts at George Washington University was followed by continued university course work in sculpture, fine art and jewelry, with thesis advisor Constance Costigan. The artist and art-partner husband Greg Fletcher have studio and resident spaces in Baltimore at Artists’ Housing, Inc.



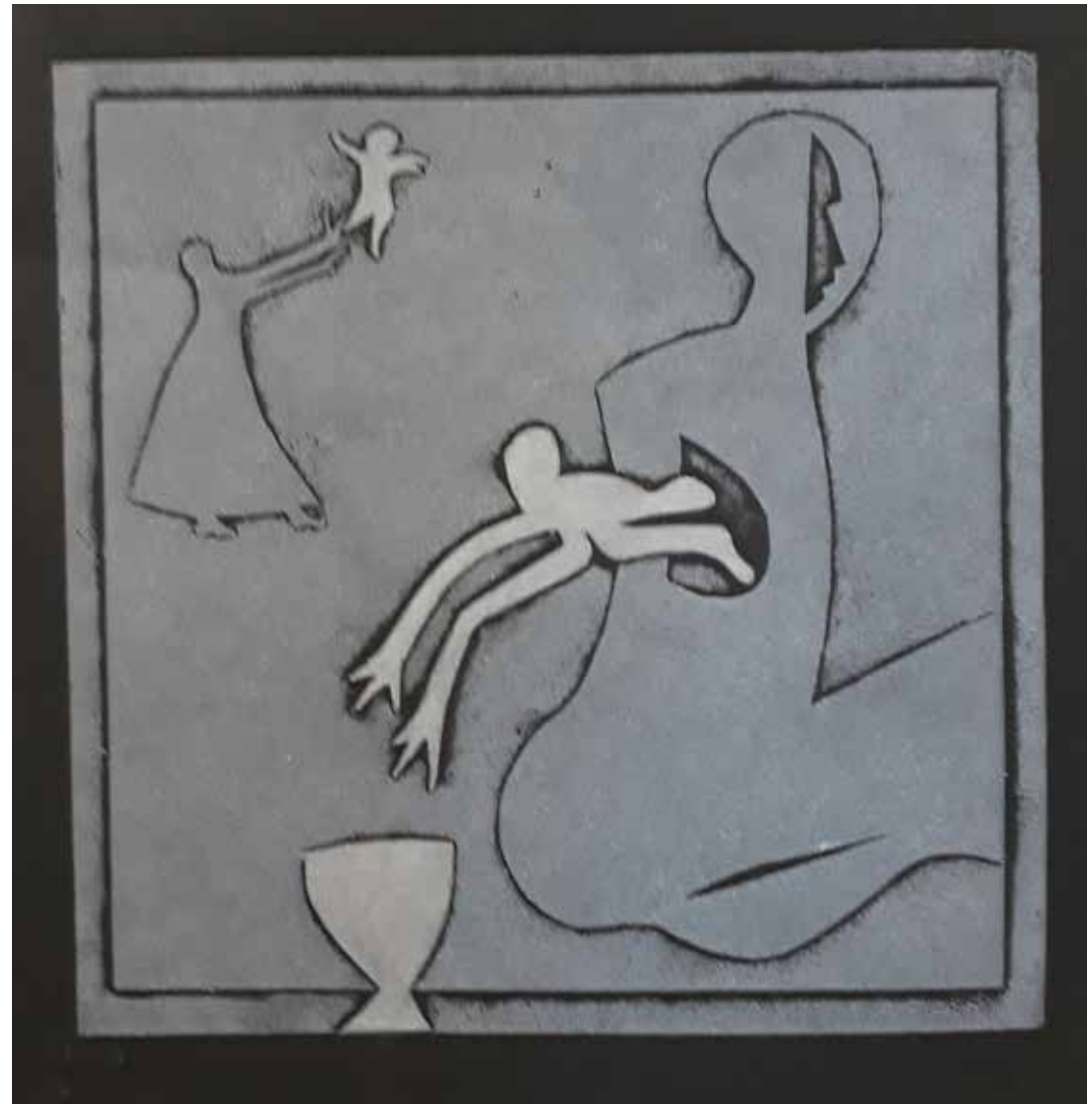
My Cup Runneth Over
8x8



Annunciation
8x8



Lucy's Walk
9x6
hand colored



Happy Childhood
8x8
hand colored



(left)
un-inked plate
18x14

(above)
Magnolias
18x14



Magnolias
18x14
hand colored



March Madness
13x16
Chine-Colle and hand tinted



Shape Shifter
10x13
Chine-Colle



Blue Pig
8x8



January Chicken Man
8x8



Mad Monkeys
8x10



Mad Monkeys
8x10
Chine Colle



White Frog
 12x12
Experimental plate of dimensional putty



Purple Horses
 8x10



Cat Tamer
16x14



Catnap
18x24



(left)
un-inked plate
18x18

(above)
cut paper

Saint Monkeying Around
18x18





Catfishing
16x11 ½



Babalawo Feast
10 x 8



Mad Goose Girl
9x6



ChickenMan, Snake Whisperer
9x6



Harvestman
11x6 ½



Scarecrow
16x20



Bleeding Heart
20x16



Bleeding Heart
20x16
hand colored



BadBabyTea Party
7x9



BadBabyTea Party
7x9



(left)
Catbird in the Wisteria
 14x11.5

(above)
Catbird in the Wisteria
 14x11.5
hand colored

Libations: Dancing Dogs
 13x9.5
chine colle





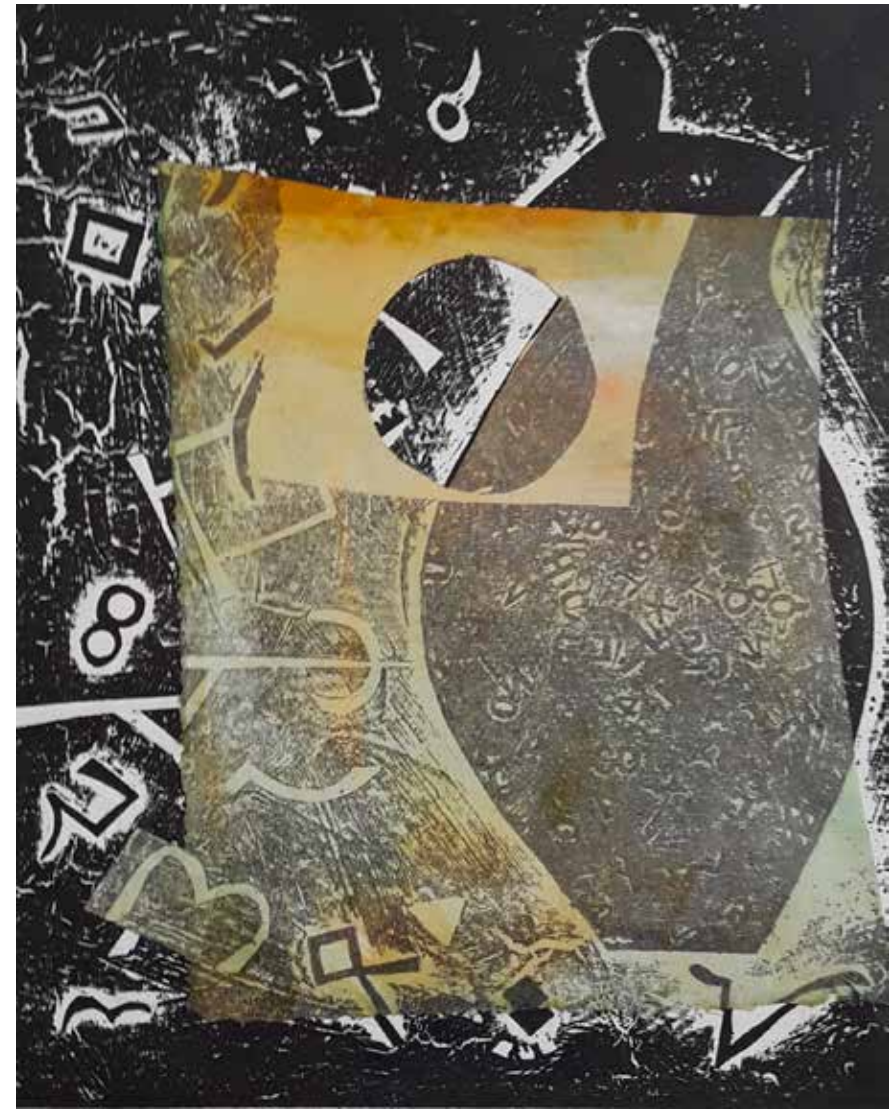
Libatons: Nure-Onna
10x8



Libations 2
20x28



Libations 3
10x8
chine colle

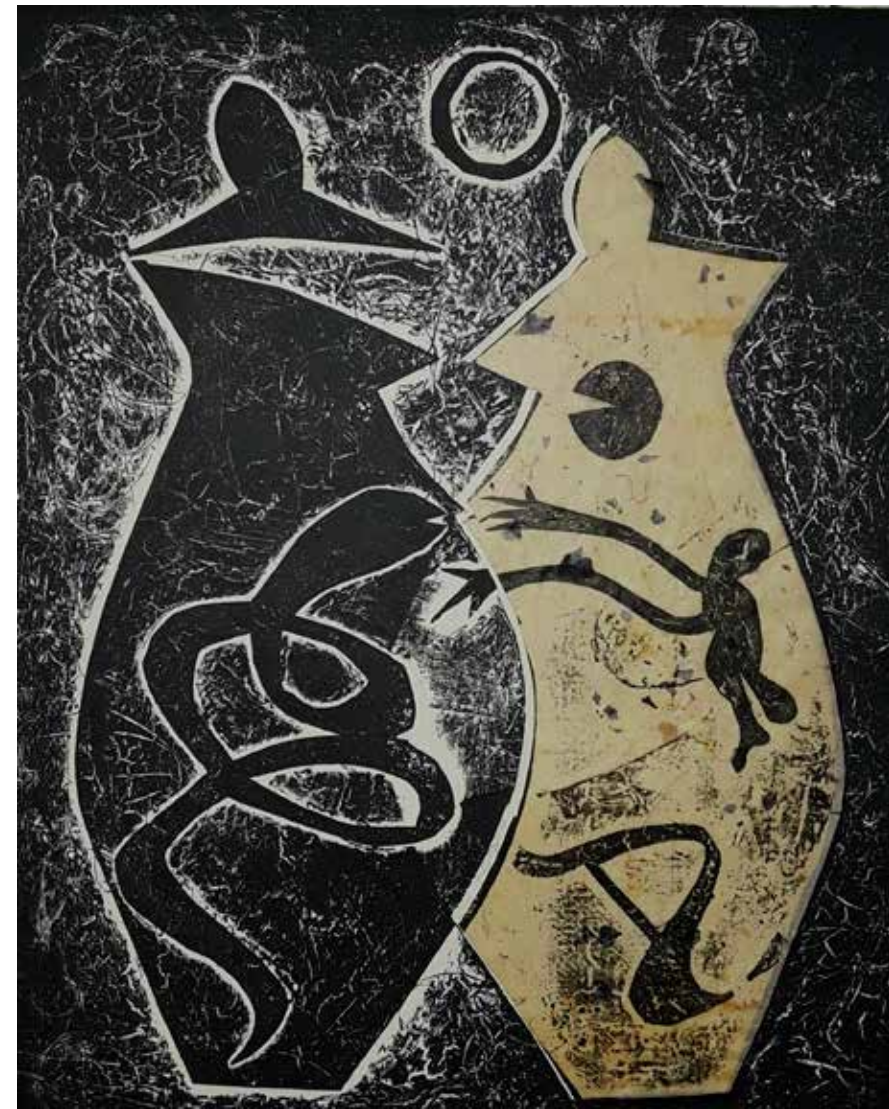


Libations 4
10x8
chine colle



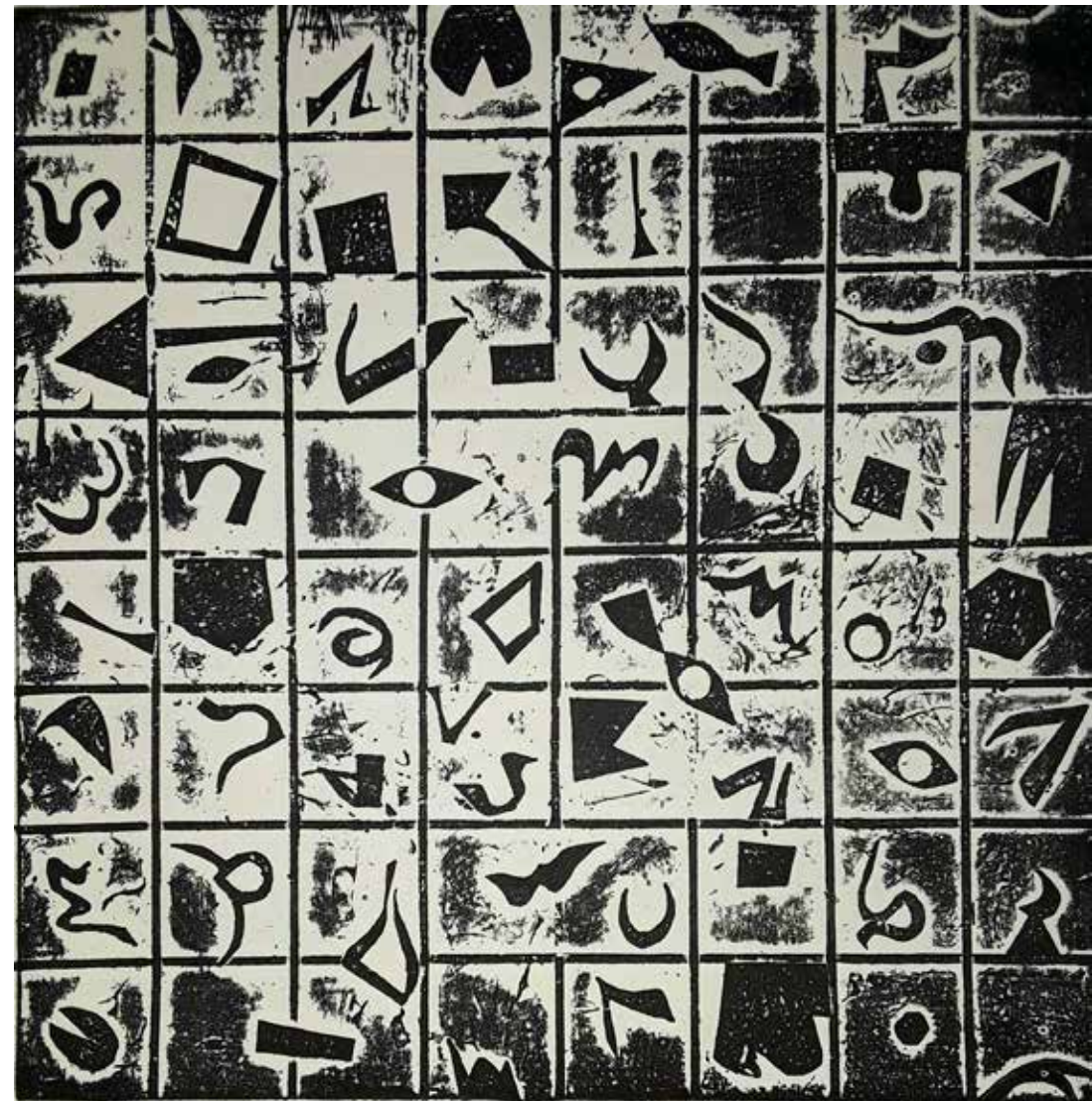
(opposite)
Libations and Elixers
 12x18

(right)
Libations: Genie
 10x8
 chine colle





Memory Board
8x8
chine colle



Memory Board
8x8



Bad Baby Tea Party
8x8

